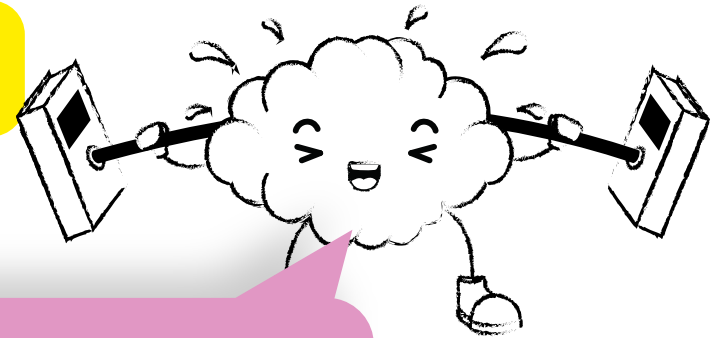


JEDNOSTKI MASY

kwintal (q)
 $1q = 100 \text{ kg}$



$1 \text{ dag} = 10 \text{ g}$
 $1 \text{ g} = 1000 \text{ mg}$

$1 \text{ t} = 1000 \text{ kg}$
 $1 \text{ kg} = 100 \text{ dag}$
 $1 \text{ kg} = 1000 \text{ g}$

